

# TRACK CUTTING MACHINE FROM STEELMAX®

## TORCH RUNNER TRACK CUTTING MACHINE

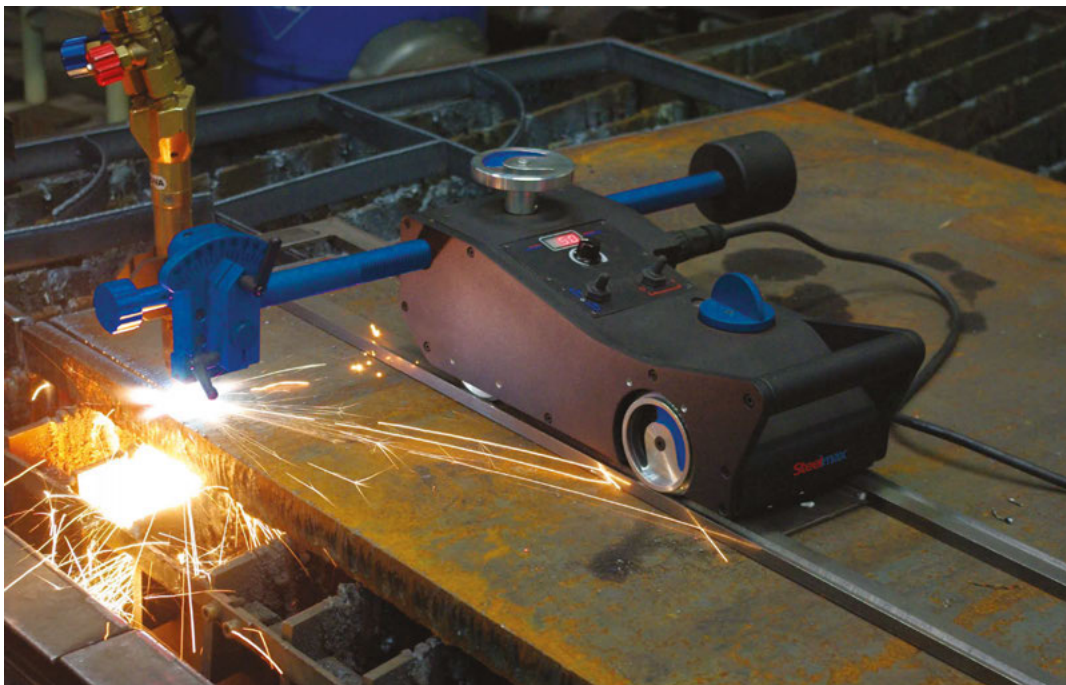
### DIGITAL CONTROL PRODUCES ACCURATE HIGH-QUALITY CUTS AND BEVELS

The **Steelmax® Torch Runner** is a state-of-the-art, digitally controlled track torch which maintains precise and stable travel speeds that produce accurate cuts and bevels with oxy-fuel or plasma. The machine can be used on any standard 6" V-grooved track. Plate cutting and weld preparation can now be done with a high degree of precision. Quality cuts and bevels produced with **Torch Runner** reduce fit-up and grinding time and lay the foundation for a high quality weld.

The **Torch Runner** is available in two versions: a standard version for oxy-fuel cutting applications (up to 59 ipm) and a high-speed version for plasma cutting applications (up to 118 ipm).

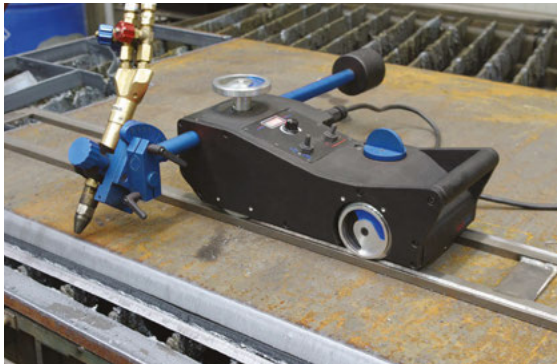
#### FEATURES

- 1-3/8" (35 mm) Machine Barrel Torch Holder with precise angle setting up to 45 degrees
- Rigid heat-proof design
- Advanced Speed Control with electronic closed loop feedback for stable speed regulation
- LED Display with readout of actual and preset speed
- Two-wheel drive with braking
- Free wheel clutch system features rapid disengagement of drive mechanism for repositioning
- Interconnecting rails for long cuts and bevels
- Optional gas manifolds for two or three hose torches
- Optional circle cutting attachment



**Steelmax**  
The tools of innovation.

# TORCH RUNNER FROM STEELMAX®

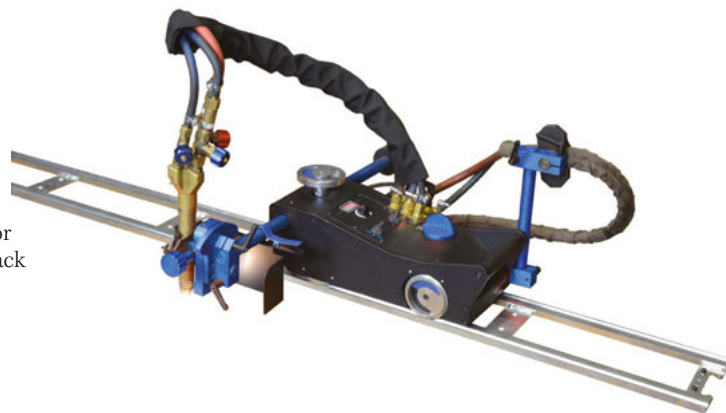


Torch Runner Technical Specifications	
Part Number	<b>SM-WC-TR</b> or <b>SM-WC-TR-230</b> <b>SM-WC-TR-PLASMA</b> or <b>SM-WC-TR-PLASMA-230</b>
Power supply	115-230V / 50-60 Hz
Travel Speeds	SM-WC-TR : 0-59 IPM (0-150 CPM) SM-WC-TR-Plasma: 0-118 IPM (0-292 CPM)
Dimensions (LxWxH)	16-13/16" (18-5/8") x 7-7/16" (25-13/16") x 7-1/16" 427 mm (473) x 189 mm (655) x 180 mm
Weight	37 lbs (16.8 kg)

## Standard kit includes:

### SM-WC-TR:

- Torch Runner drive unit
- Power cord
- Counterweight
- Geared Rack 22.8 (580 mm) long
- Machine barrel torch holder with precise angle adjustment for torch barrel diameter of 1-3/8" (35 mm) with 32 pitch gear rack



### SM-WC-TR-PLASMA:

- Torch Runner drive unit
- Power cord
- Counterweight
- Geared Rack 22.8 (580mm) long
- Trigger contact relay for Plasma
- Cable anchor support
- Torch holder with precise bevel angle settings.



*Note: Torch, gas manifold and rail sold separately*

# TRACK CUTTING MACHINE FROM STEELMAX®

## ACCESSORIES:

### 1. Track Assembly

Track assemblies can interconnect to form various lengths  
Track specification: length 72" (1800 mm), "V" Groove center-line: 6" (152 mm)  
Product Code: SM-TRO-0475-13-00-00-0

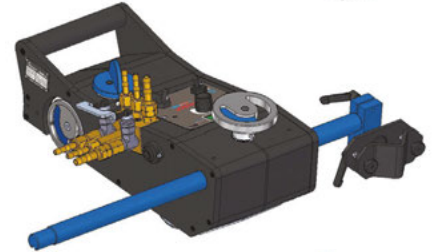


### 2. Standard Gas Manifolds

Standard Gas Manifolds act as strain relief for torch holder and allow for easy connection for gas supply hoses

2 Hose-Gas Manifold – Product Code: SM-RZD-0475-68-00-00-0

3 Hose-Gas Manifold – Product Code: SM-RZD-0475-67-00-00-0



### 3. Quick Acting Manifolds

Quick Acting Manifolds act as strain relief for the torch holder and permit quick on/off of gas supply.

Quick Action 2 Hose Gas Manifold – Product Code: SM-RZD-0475-40-00-01-0

Quick Action 3x3 Hose Gas Manifold – Product Code: SM-RZD-0475-43-00-01-0



## OPTIONAL ACCESSORIES:

### 4. Standard Torch Holder

Enables torch attachment and rough angle setting for torch barrel diameters from 1-1/8" to 1-3/8" (28-35 mm).  
Product Code: SM-UCW-0475-28-00-00-0



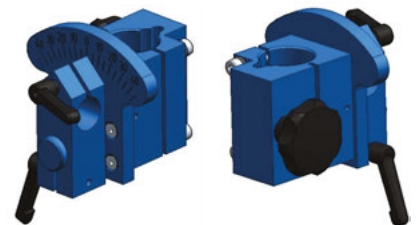
### 5. Torch Holder with Precise Bevel Angle Setting

Enables torch attachment with precise angle setting and quick up & down adjustment for torch barrel diameters from 1-1/8" to 1-3/8" (28-35 mm)  
Product Code: SM-UCW-0475-08-00-00-0



### 6. Machine Barrel Torch Holder with Precise Bevel Angle Setting

Enables machine barrel torch attachment for Machine Barrel Torch with diameter 1-3/8" (35 mm) with 32-pitch gear  
Product Code: SM-UCW-0475-42-00-00-0



### 7. Machine Barrel Torch Holder

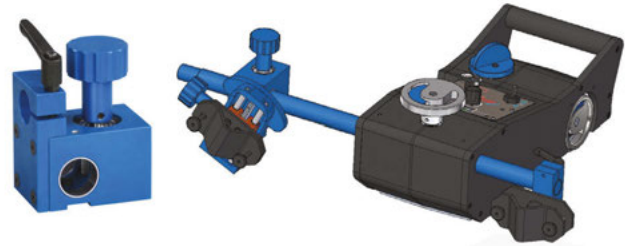
Enables machine barrel torch attachment (quick change of the height and rough angle setting)  
Holder diameter 1-3/8" (35 mm) with 32-pitch gear  
Product Code: SM-UCW-0475-29-00-00-0



# TORCH RUNNER FROM STEELMAX®

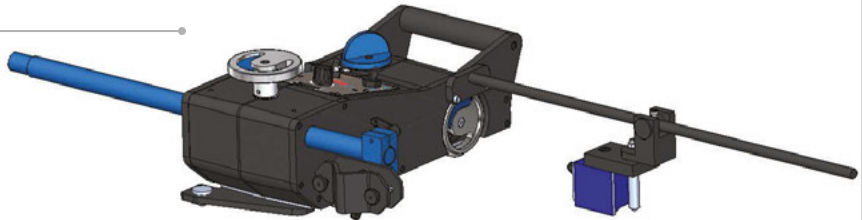
## 8. Sliding Rack Holder

Sliding rack holder enables various torch holder attachments  
Product Code: SM-UCW-0475-15-00-00-0



## 9. Circle Cutting Attachment

Enables circle cutting with radius between  
9.5" and 19.5" (240 and 500 mm)  
Product Code: SM-CYR-0475-22-00-00-0



## 10. Large Counterweight

Product Code: SM-PWG-0475-10-00-00-0



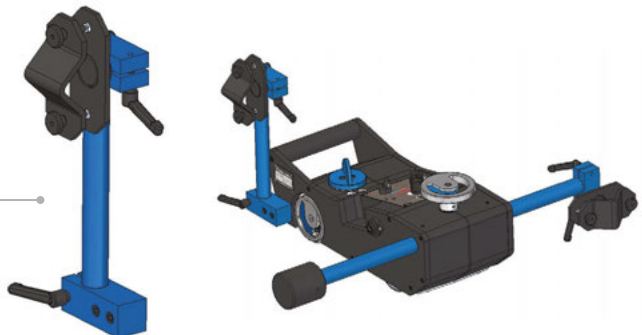
## 11. 39" (1000 mm) Geared Rack

Enables extended reach for the torch holder  
Product Code: SM-RAM-0475-23-00-00-0



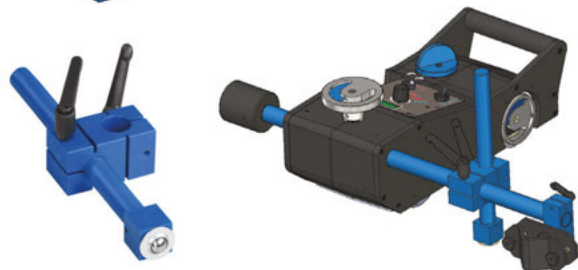
## 12. Cable Anchor

Anchors power cable and fuel hoses to relieve stress  
on the torch holder  
Product Code: SM-PDT-0475-34-00-00-0



## 13. Roller Support

Stabilizes carriage and provides constant torch standoff  
Product Code: SM-PDT-0475-26-00-00-0



**Steelmax**  
The tools of innovation.



For ordering and customer service, or to request detailed product information or demonstration videos, contact:

877-833-5629

STEELMAX.COM

sales@Steelmax.com

Fax: 303-690-9172