

THE **ADVANTAGE-2** HIGH SPEED DRILL LINE



PCD-1100/3C

B I G G E R • F A S T E R • S T R O N G E R



Peddinghaus



Dear Industry Partner,

Welcome to the World of Peddinghaus – The World of “BETTER”.

In the world of Peddinghaus we aim to be better. Take a look at any of our 5,000+ installations throughout the globe. These fabricators experience reduced costs and higher production using our equipment. Why? Because with Peddinghaus they receive better technology, better service and better quality than anyone else can provide. These things aren't easy to do, and not every company can guarantee what Peddinghaus does. I am proud that I can say these things because at Peddinghaus we work harder than anyone to give our customers the best. Whether they are located in New York, Los Angeles or Chicago; they all receive the very same service, spare parts and support that is second to none.

Welcome to Partnerships – From Software to Service to Sales.

At Peddinghaus, we maintain strong partnerships with industry leaders to ensure your success. Whether this is our relationship with leading software providers (such as Shop Data Systems, Sigmanest, Steel Office, AceCad, Tekla, FabTrol, Design Data and more) or our partnership with regional sales and support organizations – our goal is to work together to serve you better.

Welcome to the Advantage-2 Structural Drilling Machine – More Than Just a Machine.

Peddinghaus has shaped today's vision of the drill line with industry firsts such as the BDL and TDK series of equipment. With the introduction of the Advantage-2, Peddinghaus combined time tested technology with cutting edge innovation to accommodate requests from fabricators in all corners of the globe. The Advantage-2 is the first carbide drill line from Peddinghaus to utilize automatic tool changer technology and completely electronic spindle motion. This combined with Peddinghaus' renowned build quality and mechanical design provide the ultimate combination of agility and strength.

If speed is what you need, look no further. The Advantage-2 drill line from Peddinghaus is capable of processing up to 150 tons of structural steel in a typical 40 hour work week. If versatility is what you require, the ability to drill, mill, tap, countersink and scribe might capture your attention.

I invite you to take a moment to learn what this machine has done for Peddinghaus customers in all corners of the world. I think you will be impressed with what you discover.

Welcome to Peddinghaus Service – Unmatched Global Support.

At Peddinghaus, service is priority number 1. Peddinghaus' global team of customer support representatives are on duty, on call, all the time at our very own 24 hour customer support center. Combined with state-of-the-art remote diagnostic software, readily available local field support professionals and the industry leading warranty - customer support from Peddinghaus is only a call or a click away.

Welcome to Peddinghaus – A Tradition of Innovation, a Reputation for Excellence.

My great-grandfather and grandfather perfected Ironworkers during their time with Peddinghaus; then it was my father's turn to pioneer the TDK drill line. In today's world I am proud that we at Peddinghaus continue to offer new solutions for our customers such as the Advantage-2. This is only possible through constant innovation and continuing investment in research and development. I invite you to see why Peddinghaus technology is the chosen provider for steel fabricators the world over.

Carl "Anton" Peddinghaus
Chief Executive Officer - Peddinghaus Corporation



**IDEAL FOR PROCESSING
STRUCTURAL STEEL IN AN ARRAY
OF APPLICATIONS INCLUDING:**

- Steel Building Components (floor beams, columns, etc.)
- Wind Tower Components
- Joist Components
- Sign Structure Components
- Truss Components
- Girder Components
- Mining Equipment Components
- Aggregate Handling Components



ADVANTAGE-2



DRILLING | MILLING | TAPPING | COUNTERSINKING | 4 AXIS LAYOUT MARKING

Technical Specifications

Maximum Profile Dimensions	44" × 18"
Minimum Profile Dimensions	2" × 3/4"
Maximum Profile Weight	18,000 lbs
Number of Spindles	3 Spindles – 1 per Drilling Axis
Spindle Power	25 HP _(@56-40%)
Hydraulic Power Unit Size	5 HP
Optional Tool Changer	5 Stations per Drilling Axis
Optional Layout Marking	1 to 4 Axis

WHAT IS YOUR ADVANTAGE?



POWERFUL 25 HP SPINDLE MOTORS

- High-torque Siemens Smart Spindle motors
- 3000 RPM - Guaranteed to perform programmed RPM regardless of hard or soft spots in material



ELECTRONIC MOTION

- Servo driven ballscrew axes with precise positional feedback
- Robust 2" lead screw for maximum durability

MINIMUM QUANTITY LUBRICATION (MQL)

- 97% air, 3% eco-friendly vegetable oil based lubricant
- Eliminates flood coolant mess
- No need to clean parts before secondary processes (welding, painting, 4 axis carbide scribing, etc.)



HIGH-SPEED CARBIDE DRILLING

- Maximum productivity utilizing multi-spindle carbide tooling
- Three powerful spindles designed for simultaneous drilling on an array of profiles

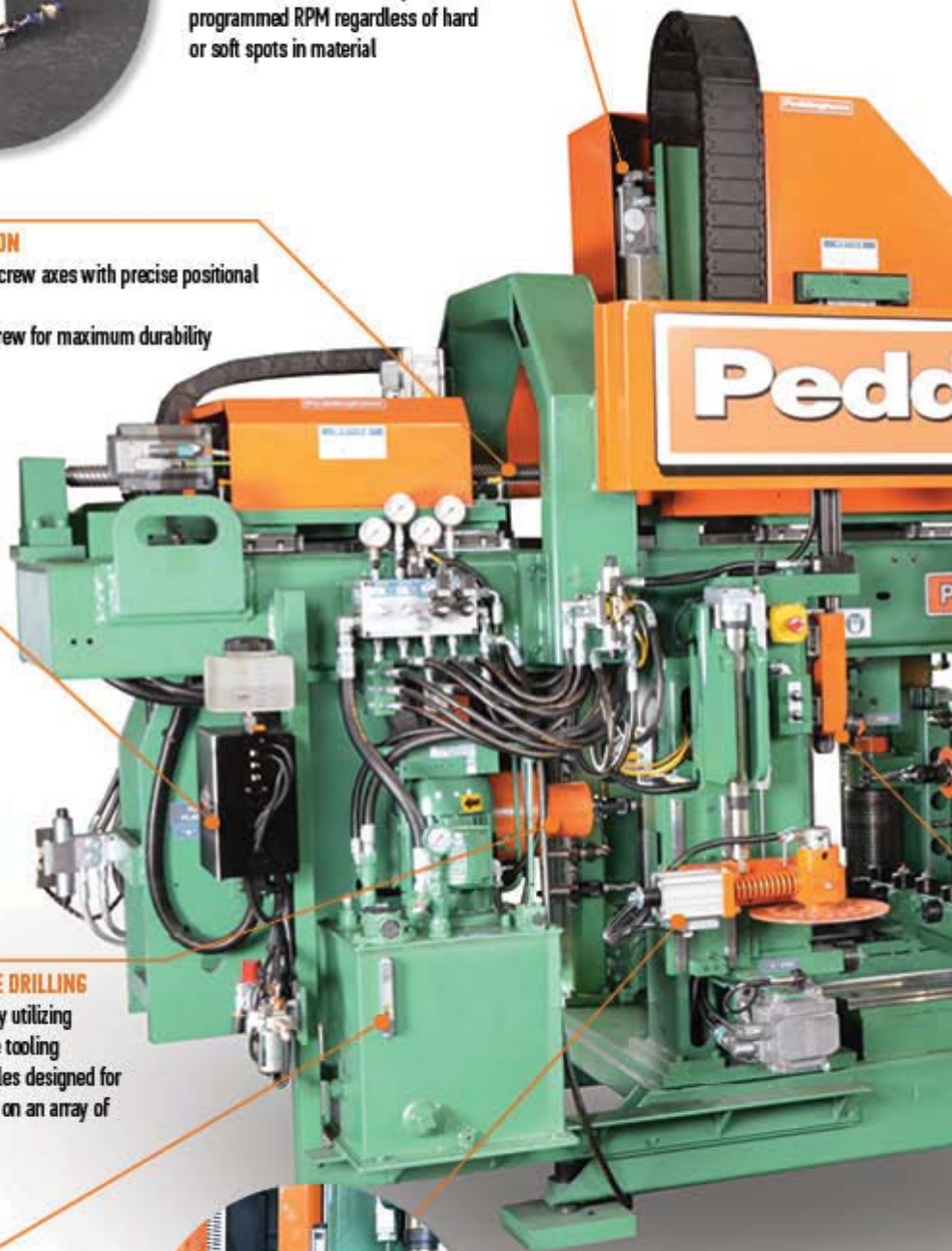
EFFICIENT 5 HP POWER UNIT

- 50% lower electrical cost when compared to previous models
- Minimized Footprint - power unit is mounted on machine for optimal floor space utilization



ROLLER FEED MATERIAL HANDLING

- Unmatched accuracy on all structural shapes
- Unparalleled efficiency - load material while machine is in production with ease



ADVANCED SIEMENS ELECTRONICS

- Siemens drives, PLC, servo motors, and more
- Siemens 840d control with 19" display
- Siemens industrial keyboard



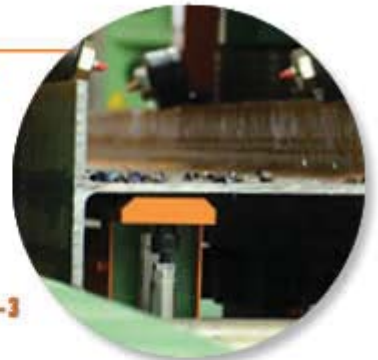
AUTOMATIC TOOL CHANGERS

- Three automatic tool changers, each with five stations
- Eliminates the need to manually change tooling during production
- Tool automatically selected upon program command



4 AXIS CARBIDE SCRIBING

- Eliminate the human error of manual layout operations
- Increase efficiency with automatic 4 axis layout marking



ROBUST CLAMPING SYSTEM

- Eliminating vibration is critical to successful carbide drilling
- The Advantage-2's ten point clamping system provides maximum rigidity, thus higher speeds/feeds and superior tool life



linghaus

TANDEM SOLUTIONS

BAND SAW INTEGRATION

The Advantage-2 drill line with its' powerful material handling support, meticulous measurement capabilities and high speed designs are ideal for tandem installations with any of Peddinghaus' automatic sawing systems. The use of high speed carbide tooling and five station tool changers allow this machine to process up to 150 tons of structural steel in a typical 40 hour work week.

Integration Options:

- In Tandem with Miter Saw
- In Tandem with Straight Cut Saw
- In Tandem with Existing Saw (Peddinghaus, or other Manufacturers)

Ideal sawing machines to integrate with the PCD-1100/3C include the DG-1100 and D6-1250 double miter band saws, and also the 1250-510 straight cut saw.

SPLIT APART FROM A SAW

If you are looking for maximum throughput, saw tandem systems may not fit your production. Splitting apart a drill and saw system enables each machine to run continuously, minimizing wait time between the different automated processes.

ACCUMEASURE SYSTEM

Saw measurement options are available via the Peddinghaus AccuMeasure Roller Feed measurement system. The AccuMeasure allows for complete handling versatility, while maintaining a streamlined CNC solution. Available for all Peddinghaus automatic band saws, the AccuMeasure is the ideal complement to a complete Peddinghaus system.



ghaus

1250 DG

THE MULTMASTER MEASUREMENT SYSTEM

PEDDINGHAUS PUSHES PAST THE COMPETITION

For a tandem installation where a band saw is positioned after the Advantage-2 drill, the system can be equipped with an optional MultMaster measurement system. The MultMaster works as an extension of the Roller Feed measurement system in order to perform cuts which may otherwise require manual positioning and saw engagement for programs with many small pieces.

1. Material is advanced into the system, and the operator engages the machine.



3. Before the material exits the drill (which would result in the machine losing automated measurement capabilities), the MultMaster is lowered to conveyor and enters the machine.



5. Once adhered to the material, the drill line clamps the MultMaster and releases material, thus transferring Roller Feed measurement to the MultMaster, which works as an extension of the material in production.



7. Once material is clamped in the saw for its final cut, the MultMaster releases material and returns to its station above the infeed roller conveyor.



2. The machine then drills and saws parts (including trim cut) sequentially using the Roller Measurement system of the drill line until the material has nearly exited the machine.



4. Once inside the machine, the MultMaster adheres to the material.



6. The MultMaster then extends to the saw for the final cuts in a program.



8. Before finishing the final cut of a program, the next piece of material can be positioned and prepared for production - meaning no waiting for a gripper style measurement device to return to a loading position.





MODULAR DESIGNS THE PEDDINGHAUS WAY

EASILY INTEGRATE INTO AN EXISTING LAYOUT - MODULAR DESIGN

The Peddinghaus Roller Feed measurement system allows for an array of material handling options. Peddinghaus conveyors can be quickly expanded, split apart, transferred across from either side (datum or non datum) and modified with no sacrifice in machine accuracy or functionality.

MINIMIZE FOOTPRINT - STORE MATERIAL HANDLING OUTDOORS

Peddinghaus' Roller Feed design makes it easy to place conveyors and cross transfers outdoors. In addition to saving shop space, this innovative method eliminates unnecessary crane handling that inhibits other operations inside of the shop. Easily unload delivery trucks outside and load conveyor without slowing other portions of production.

YOUR RESOURCE FOR SUPERIOR SHOP FLOW

Shop layout and material handling efficiency is paramount for cost savings. Every time a profile is handled with a crane, profits are lost. This unnecessary shop cost not only slows the productivity of other processes, but creates unneeded work related hazards. With the help of Peddinghaus' seasoned layout engineers and systems personnel, fabricators learn the secrets to shop floor success without experiencing the pitfalls of poor layout and planning.



Minimize Footprint



Modular Configurations



Peddinghaus Layout Engineers





PEDDINGHAUS' RAPTOR CAD/CAM SOFTWARE

Raptor from Peddinghaus is today's premier structural machine tool 3D CAD/CAM platform. Equipped with versatile modules to import, modify, inspect, create and export part programs, Raptor is fully customizable to fit the unique needs of the individual fabricator.

3D MODULE – MODIFY, INSPECT, CREATE

The core of Raptor is the 3D Module. If part data has been imported into Raptor, the 3D Module works as an inspection tool and is capable of modifying imported part information. If part files need to be created, the intuitive design and user-friendly interface of the 3D Module allows for powerful programming options.

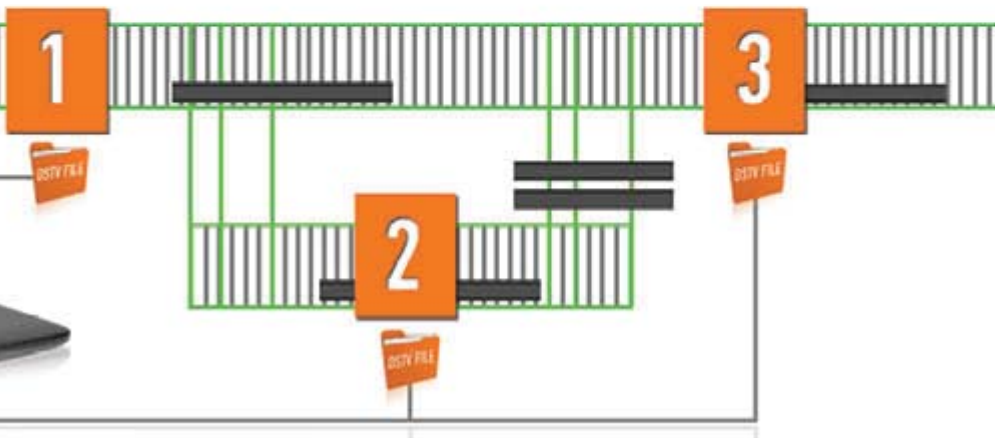
TEKLA API IMPORT MODULE

The Tekla API Module allows for the direct importation of Tekla part files into Raptor software, eliminating the need to convert to an intermediary file type.

By referencing part data with the Tekla BIM model, Raptor's Tekla API Module is capable of generating scribe marks and weld locations based on the model's original geometry. Using Raptor's Tekla API, Peddinghaus bridges the gap between design and fabrication. This is ideal for machines utilizing 4 axis layout marking.

DSTV IMPORT MODULE

Raptor integrates with popular Building Information Modeling (BIM) software programs capable of generating the common file standard –DSTV. DSTV files are imported into Raptor software for editing or for CNC file creation. Commonly used BIM programs include SDS/2 by Design Data, Tekla Structures, Graitec and more.



DSTV EXPORT MODULE

Raptor is capable of exporting part information into a DSTV file format (including scribes, copes, pop-marks and holes). All enhancements or corrections applied within Raptor are included within the exported DSTV file using this module. The DSTV export module brings the power of Raptor to third party CNC machinery that can import files of this type.

iDSTV+ AND DSTV+ IMPORT/EXPORT MODULE

Select MRP systems are capable of exporting batch nested files in a format known as DSTV+ and iDSTV+. These file types play an important role in the automated development of cut sheets for production. Raptor is capable of importing and exporting these DSTV+ and iDSTV+ files for production on equipment. This eliminates the need to manually batch nest files, which have already been batch nested within third party MRP platform.

PEDDIMAT IMPORT AND EXPORT MODULE

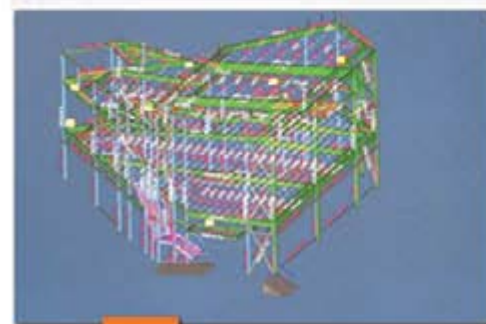
The Peddimat Import and Export Module provides users with the ability to create new Peddimat files or utilize existing Peddimat files within Raptor. This option allows users complete flexibility in regards to legacy software compatibility.

PEDITRACK PARTS TRACKING MODULE

The PeddiTrack parts tracking utility is a module for monitoring the production of parts on Peddinghaus machines using Siemens controls. PeddiTrack works in the background of the CNC control creating output files that display vital information regarding part production.

BENEFITS OF PEDITRACK INCLUDE:

- Documentation of production
- Potential to view progress remotely
- Ability to monitor employee productivity
- Elimination of human error in the production monitoring process



Design and Export



Program for Production



Process and Fabricate



ADVANTAGE-2 USER TESTIMONIALS

JT STEEL -

Brigham City, Utah - USA



"Change is necessary to stay competitive and continue to serve our customers; speed is what our customers want, so efficiency is our goal. That is why JT Steel began to investigate automation."

In construction things move so fast, you don't have time to drill the holes or layout the material the way you used to. This industry is automated. In order to step into this century, you have to automate or else you are going to be left behind. At JT Steel we believe in being simply the best when it comes to customer satisfaction, and that is what we offer with our Peddinghaus machines."

- Jerry Taylor, President

"With the new Advantage-2 drill line, things are moving through the shop a lot faster than ever before. It's really amazing to see what our shop guys can now do in a shift. As a result of our equipment, we are capable of processing approximately 150 tons of steel in a single forty hour work week."

- Dustin Walk, Production Manager

SPERLING INDUSTRIES -

Sperling, Manitoba - Canada



"We process structural steel for building fabrication and also the development and installation of kill-floor equipment for the beef and pork industry. Structural steel has always been a major part of our production, but never before did we process the volume that we do now with our Peddinghaus equipment."

Processing of structural steel in our past was a lot of manual work; we didn't have any CNC equipment; we basically manually positioned material and saw cut, manually laid out welds and holes, and punched or mag drilled the holes.

Our Peddinghaus equipment has definitely met or exceeded our expectations. I think we all have great things to say about them, including the operators."

- Jeff Nicolajsen, Owner

HARRELL'S METAL WORKS -

Grenada, Mississippi - USA



"We were amazed when we turned the Advantage-2 drill line on and the first few beams went through."

- Bradley Barrett, Shop Operator

"I knew in order to grow and increase capacity, I had to get an automated drill line. The Advantage-2 drill line did better than what I thought it would. Before, we would have fitters waiting on our older punch line. Now, they are always busy with the new Advantage-2 drill line's output."

The drill has doubled our production over our older punch line. The volume of our production is up, our profit is up and now we can push more through the door."

- Randy Harrell, Owner

DOHERTY STEEL -

Paola, Kansas - USA



"Compared to our old drill and punch lines, the new Advantage-2 drill is just amazing; this thing eats steel. The drill is outrunning everything including our two saws in the machine bay. I don't know what else to say, it's just fast and accurate."

- Dennis Doherty, President

KOENIG IRON WORKS -

New York, New York - USA



"We need to have steel moving through our shop, otherwise the whole facility gets bogged down. The faster Advantage-2 drill allows us to tackle larger sections than the older one due to its speed and bigger operating envelope. We are processing beams that before would have been outsourced.

Sections that used to take 20 minutes are now taking 6 to 7 to drill on the new machine because of the technology. The new machine is like night and day compared to the older one."

-Nick Morisset, Executive Vice President

ON CALL. ON DUTY. ALL THE TIME.

24 Hour Service and Support from Peddinghaus

24 HOUR CUSTOMER SERVICE

The Peddinghaus state-of-the-art Service Center continues to grow to serve you even better – and is available 24 hours a day!

- 50+ trained traveling field service technicians for on site assistance
- 20+ knowledgeable telephone technicians
- Complete training facility for operators and programmers

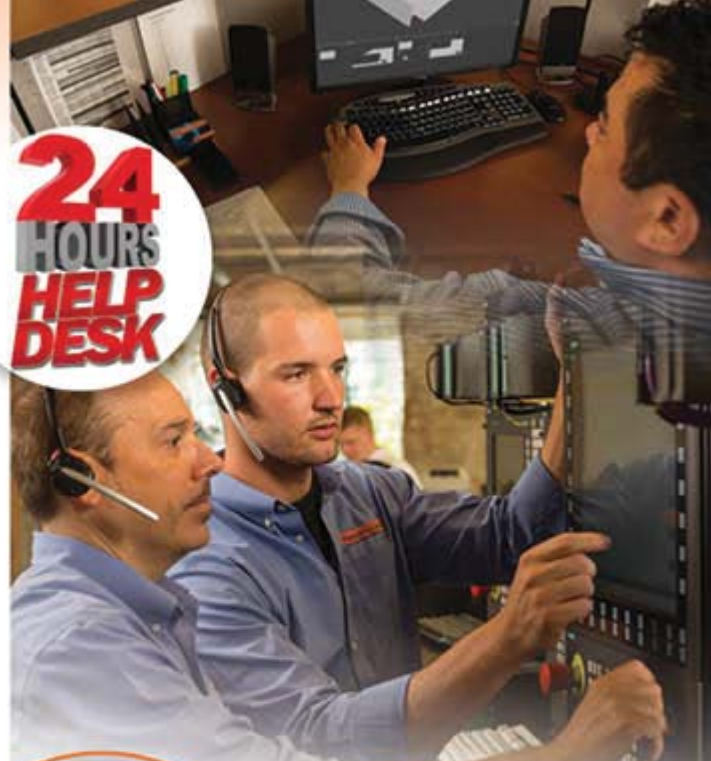
WEBCAM TROUBLESHOOTING

Each of Peddinghaus' machines are shipped with a simple to use WebCam and software. Peddinghaus technicians can view mechanical questions from anywhere in the globe using this latest in customer service technology.

MODERN REMOTE ASSISTANCE

Peddinghaus' 24 hour tech support center is equipped with modern remote assistance technology. This allows Peddinghaus technicians to remotely diagnose machine questions or issues from anywhere on the globe. With the flexibility of the powerful Siemens control, and modern remote internet software, Peddinghaus technicians can view the control screen of a machine in question with ease. Nearly 90% of service issues can be solved without the need for a service visit using this technology.

**24
HOURS
HELP
DESK**



Peddinghaus Corporation USA
300 N. Washington Ave.
Bradley, Illinois 60915 • USA
Tel: 815-937-3800
Fax: 815-937-4003
www.peddinghaus.com

Paul Ferd. Peddinghaus GmbH
Hasslinghausver Str. 156
58285 Gevelsberg
Germany
Tel: + 49 (0) 2332 72-0
Fax: + 49 (0) 2332 72-208

Peddinghaus Española, S.A.
Pol. Industrial Gojain s/n
01170 Legutiano
Alava, Spain
Tel: +34 945 465370
Fax: +34 945 465526

Peddinghaus Corporation UK Ltd
Unit 6 Queensway Link
Stafford Park 17
Telford, Shropshire
UK
Tel: +44 1952 200 377
Fax: +44 1952 292 877

Peddinghaus Latin America
Edificio HQ Torre Alestra
Ave. Lázaro Cárdenas 2321 Pte.
Col. Residencial San Agustín
San Pedro, Garza García C.P.
66260
Tel: +52 81-1001-7087
Fax: +52 81-1001-7001

Peddinghaus

THE GLOBAL LEADER IN FABRICATION
QUALITY • INNOVATION • SERVICE

**SEE THE ADVANTAGE-2
ONLINE HERE!!!**



Download a QR Code Scanner App for your smartphone and experience Peddinghaus in the palm of your hand!!!